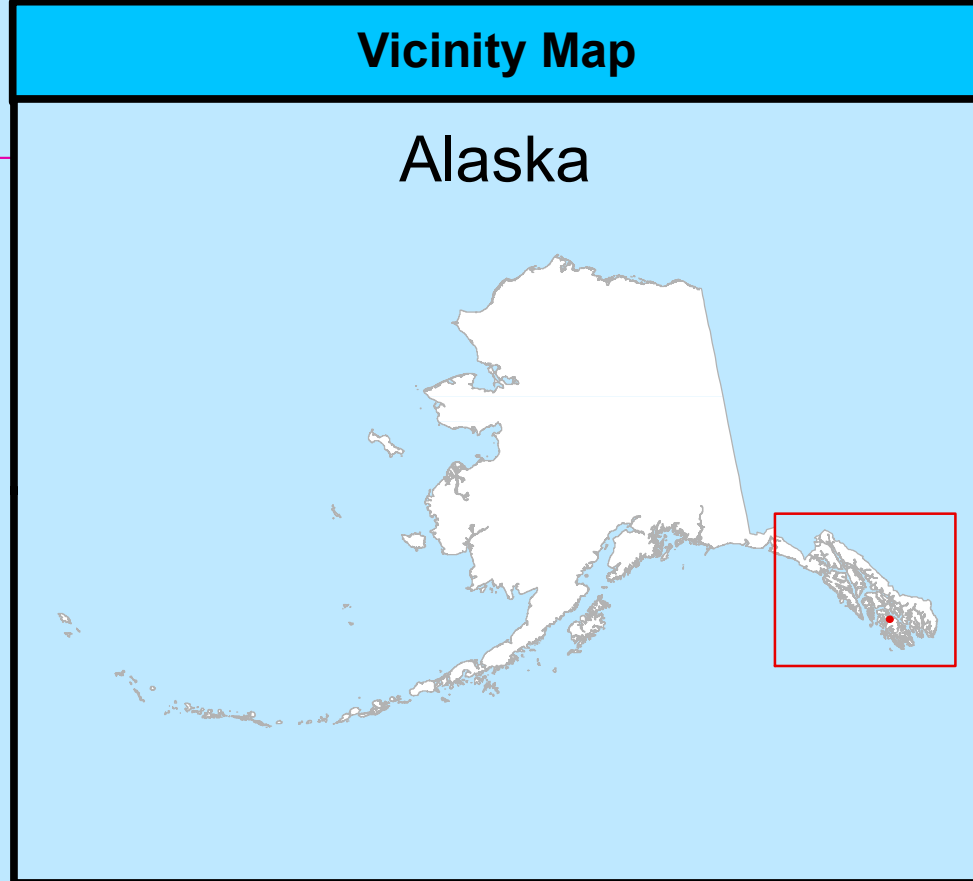
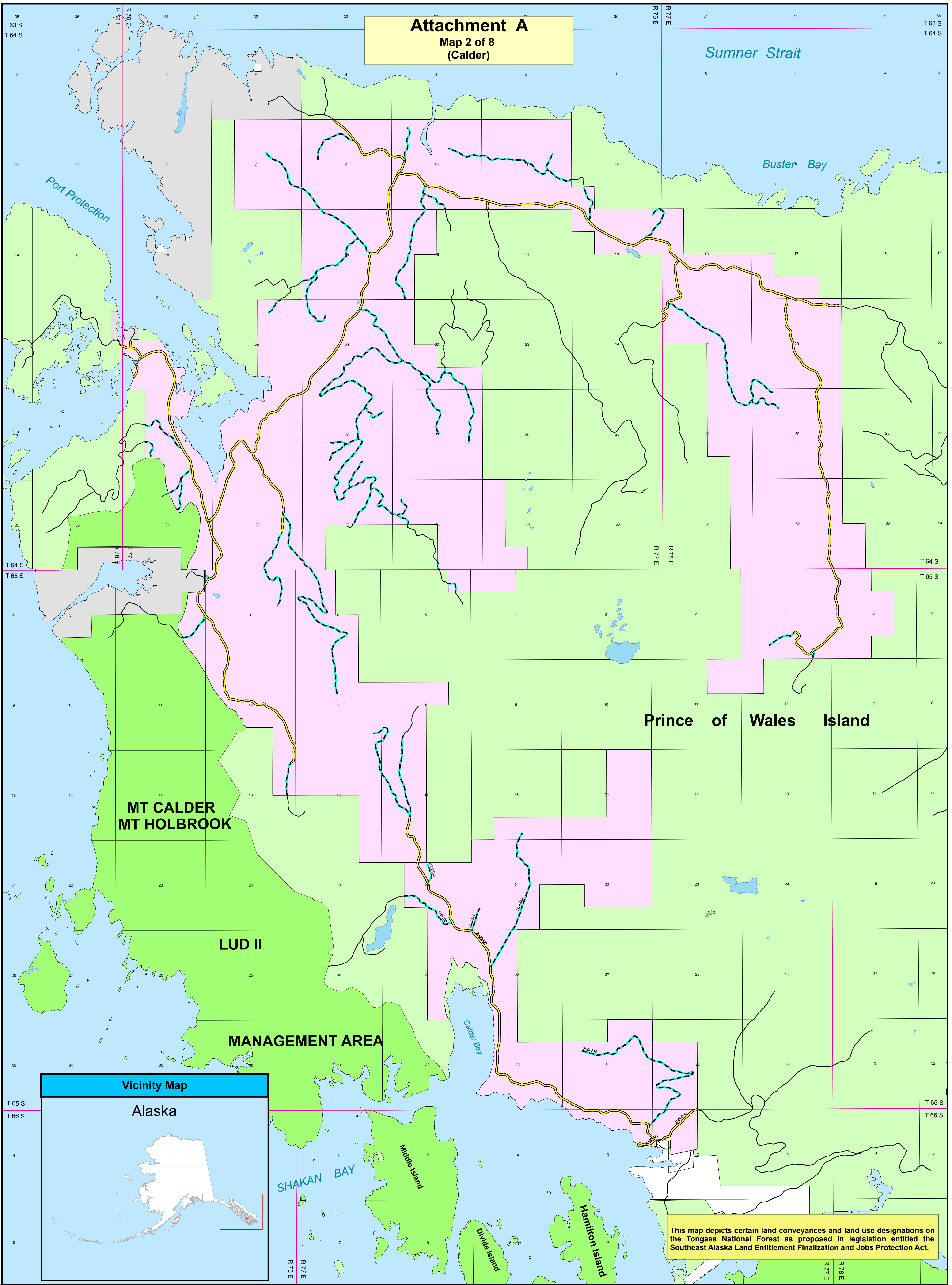


Attachment A

Map 2 of 8
(Calder)



This map depicts certain land conveyances and land use designations on the Tongass National Forest as proposed in legislation entitled the Southeast Alaska Land Entitlement Finalization and Jobs Protection Act.

References

This map was prepared at the request of Congressman Don Young (R-AK).

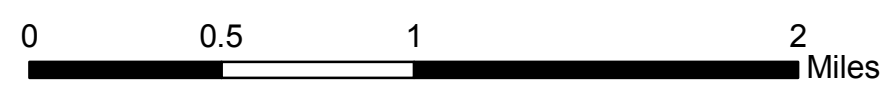
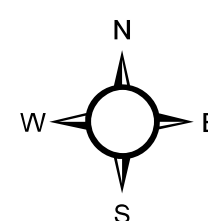
Synopsis: Southeast Alaska Native Land Entitlement Finalization and Jobs Protection Act - Authorizes Sealaska Corporation, the Regional Corporation for southeast Alaska, to select and receive conveyance of its remaining land entitlement under the Alaska Native Claims Settlement Act (ANCSA).

Disclaimer

The USDA Forest Service makes no warranty, expressed or implied regarding the data displayed on this map, and reserves the right to correct, update, modify, or replace this information without notification.

H.R. 1408 Legend

- | | |
|--|----------------------------------|
| Selection by Sealaska Sec 4 (b) (1) | USDA Forest Service System Lands |
| ANCSA - Sealaska Ownership | STATE |
| Existing Roads and Trails Proposed for Public Use | |
| Roads Sec 5 (d)(1)(A) | LUD II / Wilderness |
| Trails Sec 5 (d)(1)(B) | Forest Service Roads |



Map Date - February 1, 2011
Map Revision Date -

Map 2 of 8

Southeast Alaska Land Entitlement Finalization and Jobs Protection Act

Legislative Map: 112th Congress H.R.1408

Calder, Prince of Wales Island
Calder Selections 20,828 Acres
T 65 S, R 77 E Copper River Meridian



U.S. Forest Service - Alaska Region
Tongass National Forest



U.S. Congressional District, Alaska

Copies of this map are available for public inspection in the Office of the Regional Forester, Alaska Region, Juneau, Alaska.